



## 2008 Fall Conference Agenda

### Friday, September 26, 2008 – Business Attire

- 4:00 – 5:00 pm**                      **Registration Available**                      **Second Floor, Reynolds**  
Check-in and pick up your materials before the conference begins. Visit with alumnae and students in the Great Room as members arrive for the fall program. Do you have a current photo? Our photographer will be set up to take headshots during this time.
- 5:00 – 7:00 pm**                      **Welcome & Conference Kick-Off**                      **Great Room**  
**Presenter/s: Jill Brown, Todd McCubbin, Jaimie Pfeifer, Kristie Bray, Laura Merritt, Daniel Turban & Cheryl Stephens**  
Kick-off the conference by meeting your mentor or mentee and networking with fellow members. Presenters will highlight the weekend's conference activities as well as share information on the opportunities available to you as a member of the Society. Enjoy a fun networking activity before moving into the ballroom for the networking dinner.
- 7:00 – 8:30 pm**                      **Networking Dinner**                      **Columns Ballroom**  
**Keynote Presenter: Melissa Stevens, Image Consultant**  
Speak up. Think about what you say. How you sound. And how you speak. Did you know it has a profound effect on all your relationships? Learn key aspects of language, professional etiquette and verbal assertiveness to refine your personal image so you feel comfortable in any business situation. Be sure to sit with your mentor/mentee over dinner and enjoy this engaging presentation by Mizzou alumna Melissa Stevens.
- 8:30 – 10:00 pm**                      **"Ladies Night"**                      **Great Room**  
Feel comfortable to bring comfy clothes to change into and get ready for a fun ladies night! Following the dinner, visit with fellow members as you indulge in delicious desserts, sample a variety of Missouri wines, get a relaxing neck massage and try your hand at wii! Sample the stations and try to meet five new women as you pamper yourself after dinner!

### Saturday, September 27– Black & Gold Business Casual Dress

- 8:00 – 8:30 am**                      **Breakfast With Your Mentor/Mentee**                      **Columns Ballroom**  
Meet your mentor or mentee for breakfast to begin the day and prepare for the remainder of the conference.
- 8:30 – 9:30 am**                      **Fiction at Work**                      **Columns Ballroom**  
**Presenter: Trudy Lewis, Professor, Department of English**  
Dr. Trudy Lewis will lead a discussion about her journey as an author. Hear her first-hand account of one of the stories from *The Bones of Garbo*, the spring book club selection. A copy of the story, *Marijuana Tree*, can be found in your conference materials.

9:30 – 10:30 am

**Breakout Session #1**

**Students:**

**Who Am I? Who Are You?**

**Columns D&E**

**Presenter: Andrew McCrea, Motivational Speaker**

Great leadership in business and in life requires an individual to not only know their strengths and limitations, but to also see the world from another's point of view. An individual with a good perspective on their own attitudes, goals and values can better understand how others perceive them. This session will concentrate on how this topic can be integrated into one's life and career and is exclusively for student members.

**Alumnae:**

**1A. Heart Truth & Health**

**Great Room**

**Presenter: Marcia Beckett, RN BSN, Missouri Heart Center**

Heart Truth is an educational campaign focused on raising public awareness among women regarding heart disease. Learn tips on good heart health as well as ways to get involved in the campaign.

**1B. Campus Tour/Fitness Walk**

**Departing from Lobby**

**Presenter: Mizzou Tour Team**

Stretch your legs and explore campus on a tour guided by a current Mizzou student. See some of the newest campus landmarks as well as the exciting construction transforming the campus. Bring your walking shoes!

10:30 – 10:45 am

**Break**

10:45 – 11:45 am

**Breakout Session #2**

**Alumnae:**

**Who Am I? Who Are You?**

**Columns D&E**

**Presenter: Andrew McCrea, Motivational Speaker**

Great leadership in business and in life requires an individual to not only know their strengths and limitations, but to also see the world from another's point of view. An individual with a good perspective on their own attitudes, goals and values can better understand how others perceive them. This session will concentrate on how this topic can be integrated into one's life and career and is exclusively for alumnae members.

**Students:**

**2A. Health Care Basics**

**Donrey Media Room**

**Presenter: M. Kay Libbus, Professor & Director of Graduate Studies,  
MU Sinclair School of Nursing**

You won't want to miss this session on health care basics. This interactive session will cover topics such as health insurance, questions you shouldn't be embarrassed to ask your physician, and more!

**2B. Opportunities after Graduation – Panel**

**Great Room**

**Presenters: Molly Burress, Peace Corps; Jaimie Pfeifer, AmeriCorps; Ashley Sewell, Teach for America**

Interested in getting involved in Teach for America, AmeriCorps or the Peace Corps? Learn more about these opportunities from recent graduates and young alumni.

11: 45 – 1:00 pm	<b>Lunch &amp; Keynote</b> <b>Ordinary to Extraordinary: The Three Keys to Positive Results in Life</b> <b>Presenter: Andrew McCrea, Motivational Speaker</b>	<b>Columns Ballroom</b>
	<p>Perhaps you have wondered what helps some people reach success time and time again, while others seem to stand in place. Andrew McCrea, a Mizzou alumnus, has literally interviewed over a thousand people in search of answers regarding the qualities of good leaders. McCrea will describe the three key qualities needed to find success. You'll laugh, learn and be motivated to use these keys to find positive results in your career, community, family and life!</p>	
1:00 – 1:15 pm	<b>Break</b>	
1:15 – 2:15 pm	<b>Breakout Session #3</b>	
	<b>3A. From Local and National First Lady to Political Office Holder</b>	<b>Great Room</b>
	<b>Presenter: Betty Winfield, Professor, Missouri School of Journalism</b> <p>As media coverage of the 2008 presidential race intensifies, potential first ladies Michelle Obama and Cindy McCain and vice presidential candidate Sarah Palin are facing increased scrutiny. Betty Winfield will discuss the media coverage swirling around these women throughout the intense campaign and how you can get involved in running for political office.</p>	
	<b>3B. Organic 101/Going Green</b>	<b>Columns D&amp;E</b>
	<b>Presenter: Mary Hendrickson, Associate Director, Community Food Systems &amp; Sustainable Agriculture Program</b> <p>Environmentally friendly products are on the rise, but what does it mean to buy organic? Learn more about how to find these products locally and how they'll impact your health.</p>	
2:15 – 2:30 pm	<b>Carpool to Mizzou Arena</b>	<b>Transportation on Own</b>
2:30 – 4:00 pm	<b>Football 101: An X's and O's Clinic</b> <b>Presenter: Vicki Pinkel</b>	<b>Clinton Club at Mizzou Arena</b>
	<p>Meet the first lady of Mizzou football and learn the X's and O's of the game as well as how she balances her personal life with the demands of her husband's job. Afterward, enjoy a tour of Mizzou Arena followed by a tailgate themed closing reception as we say goodbye for now.</p>	
4:00 – 5:30 pm	<b>Post-Conference Tailgate Reception</b>	<b>Clinton Club at Mizzou Arena</b>

**SAVE THE DATE!**

Spring 2009 Meeting Date: April 3 – 4, 2009  
Fall 2009 Meeting Date: October 9 – 10, 2009

Stay connected at [www.griffithsleadershipsociety.com](http://www.griffithsleadershipsociety.com).



## **Fall 2008 Leadership Conference Speakers**



**Todd McCubbin, Executive Director, Mizzou Alumni Association**

Todd McCubbin directs the operational and financial activities of the Alumni Association. He is responsible for increasing Association membership, managing the budget and the relationship with the Association's governing board and its committees, overseeing alumni and student programming and events, managing relationships with divisional and affinity alumni organizations, and representing the Association on campus. He manages the integration of the Association's activities with other campus advancement efforts.

McCubbin manages a staff of 20 that provides services to more than 37,000 dues-paying members of the Association and 239,000 addressable alumni. Over 1,200 volunteers are actively engaged in Alumni Association outreach efforts. He works with the Association's affinity partners, Governing Board and International Board of Directors.

McCubbin received his bachelor's degree in Journalism from Truman State University in 1993 and a master's degree in Education from MU in 1995. He was selected as Forman Fellow for the Council of Alumni Association Executives in 2000. In addition to his career in advancement, McCubbin serves on the Board of Directors for Boone Family Resources and the Missouri/Illinois Region of the American Red Cross. He is active with the Columbia Chamber of Commerce, CASE (Council for Advancement and Support of Education) and the Daniel Boone Little League. Todd and his wife, Debra, have two daughters, Avery and Mya, and a son, Tate.



**Kristie Bray, Alumnae Member**

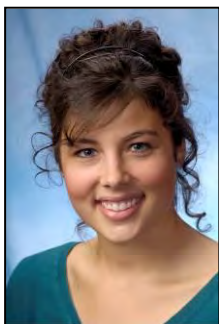
Kristie Bray is a native of Cameron, MO. She attended the University of Missouri and graduated in 1998 with a Bachelor of Science in Agricultural Education. After attending Mizzou, Kristie worked for the National Pork Producers Council in Des Moines, IA as an Educational Program Manager. She began work for the Iowa Agricultural Development Authority as a Program Specialist in 2001. Five years ago Kristie moved back to Kansas City where she currently resides and works for Heritage Trading Co. as a Senior Customer Service Representative. She works with a nationwide dealer base selling farm products to Purina stores, co-ops and farm stores.

Outside of her professional career, Kristie enjoys attending sporting events, spending time with family and friends and traveling.



**Jaimie Pfeifer, Alumnae Member**

Jaimie is a native of Cameron, Missouri and a 1998 graduate of Mizzou with BS in Biology. Upon completion of undergraduate studies, Jaimie decided to join the AmeriCorps VISTA program, at which time she was assigned to an adult literacy organization in inner-city Baltimore, MD. There she worked with high school drop-outs (the attrition rate in that area of Baltimore was approaching 80%) and helped to tackle adult illiteracy. After a year of service, Jaimie began a professional program at the Southern College of Optometry in Memphis, TN. Today, she practices in an ophthalmology/optometry group practice in her hometown. Jaimie lives nearby in Liberty with her husband Scott and one-year-old son Will.



### **Laura Merritt, Student Member**

Laura is a senior at the University of Missouri studying health sciences and political science. She hails from Texas and is a second-generation Tiger who has a perfect home game attendance record. Laura is involved in a number of campus activities including Mortar Board, AASB, Honors College Ambassadors and Kappa Alpha Theta. Her real passion is for Health Policy.

In 2006 Laura started a non-profit organization advocating stem cell research. Her organization's efforts impacted the passage of Amendment 2, which legally protects stem cell research. Her organization has since shifted to have a national focus (IAmProStemCell.org). Laura has other health related interests, including production of a modified sweatshirt that provides IV access while keeping patients warm.

Last spring Laura was named one of 65 Truman Scholars in the U.S. for her dedication to public service. She was also selected as one of *Glamour Magazine's* Top Ten College Women 2008 and was honored in the September issue. Laura is currently taking the semester off to work on Senator Chris Koster's campaign for Attorney General. She will graduate in May 2009.



### **Cheryl Stephens, Alumnae Member**

Cheryl Stephens graduated from Mizzou in 1996 with a bachelor's degree in Journalism, and earned an M.A. in College Student Personnel from Bowling Green State University in 1998. She worked at the University of Texas at Austin as a Hall Coordinator for two years and then moved to St. Louis where she joined the Office of Residential Life at Washington University. In her most recent role, as Associate Director of Residential Life, she oversaw the housing assignments process for 4,000 residential students, supervised four Residential College Directors, coordinated sustainability efforts, served on several university committees, and led initiatives like StrengthsQuest, as well as facilitated leadership training for students. Recently, she participated in the St. Louis CORO Women in Leadership Program.

An active member of the St. Louis community, Cheryl served two terms as President for the Gateway Tigers Chapter of the Mizzou Alumni Association, among several other roles and volunteered at her church. She enjoys reading, being outside, traveling and has recently taken an interest in "green" and sustainable living.

Cheryl is one of Columbia's newest residents. She and her family moved here in August when her husband, Joe, accepted a position at MU in the Trulaske College of Business. She is currently staying home with their 10-week old daughter, Cate, and three-year old daughter, Caroline. Cheryl has a new appreciation for mothers who stay at home with their children. She plans to return to work (outside of the home) when the right opportunity comes along!



### **Daniel B. Turban, Professor & Chair, Department of Management, Trulaske College of Business**

Griffiths Leadership Society  
[www.griffithsleadershipsociety.com](http://www.griffithsleadershipsociety.com)

Stephen Furbacher Professor in Organizational Change, Professor of Management. B.A. University of Hawaii, 1980; M.A. University of Houston, 1985; Ph.D. University of Houston, 1989. Professor Turban is a member of the Academy of Management, the American Psychological Association, and the Society for Industrial-Organizational Psychology. In the Spring of 1996 he was a visiting professor for Southern Illinois University's Hong Kong Executive MBA Program, and in 1997 he was a research fellow at the Chinese University of Hong Kong. During the Winter Semester of 2000 he was a visiting professor at the University of Western Australia in Perth, Australia. His current research interests include mentoring processes, employment interviews, recruitment process, organizational choice, and supervisor-subordinate relationships. He has received several teaching and advising awards, including the Governor's Award for Excellence in Teaching (2006), the William T. Kemper Fellow for Excellence in Teaching (2001), the University of Missouri Faculty-Alumni Award (2002), and was the recipient of the College of Business Distinguished Research Fellowship Award for the academic year 1997-1998. In addition, he was a recipient of the Harry Hall Trice Faculty Research Award (1992 & 2000). He has published articles in journals such as the *Academy of Management Journal*, *Journal of Applied Psychology*, *Journal of Vocational Behavior*, *Journal of Organizational Behavior*, and *Journal of Occupational and Organizational Psychology* and is serving or has served on the editorial board of the *Academy of Management Journal*, *Journal of Applied Psychology* and *Personnel Psychology*.



**Melissa Stevens, Image Consultant & CEO, Patricia Stevens Famous Models, Inc.**

Melissa Stevens is internationally recognized as the expert in Corporate and Personal Image Projection. She is an image consultant, trainer and speaker who brings together her experience in education, fashion coordination, business management and career development to create the Business with Style Training Forum. Her dynamic presentations are as motivational as they are informational and inspirational!

While she continues her role as CEO of Patricia Stevens Famous Models, Inc., Melissa directs her time and energy as a speaker, management consultant and personal and corporate coach.

A graduate of the University of Missouri, Stevens earned her Bachelor of Science degree in the area of Textile and Apparel Management. She resides in Kansas City and is an adjunct faculty member for The Metropolitan Community Colleges, Baker University, Iowa State University, Kansas State University, Southwest Missouri State University and the University of Missouri at Kansas City.



### **Trudy Lewis, Author & Faculty, MU Department of English**

Trudy Lewis is the author of the short story collection *The Bones of Garbo*, winner of the Sandstone Prize in Short Fiction (Ohio State University Press). Her work has appeared in *The Atlantic Monthly*, *Best American Short Stories*, *Cream City Review*, *Fence*, *Meridian*, *New England Review*, *Southwest Review*, *Third Coast*, and others. Her first novel, *Private Correspondences*, won the William Goyen Prize (TriQuarterly Books/Northwestern University Press), and her short stories have received the Lawrence Foundation and Glenna Luschei Awards from *Prairie Schooner*. Trudy is currently a Professor of English-Creative Writing at the University of Missouri and has recently served as the Viebranz Visiting writer at Saint Lawrence University. She is also active in Anvil/lyre studio, a multimedia arts

collective founded by her husband Mike Barrett.



### **Andrew McCrea, Motivational Speaker**

Andrew McCrea is an award-winning syndicated radio broadcaster, a nationally recognized speaker and a farmer and rancher. He is the host of a nationally syndicated radio feature, "The American Countryside," a program that has won five Oscars for rural and agricultural broadcasting. He has interviewed hall of fame sports stars, Emmy and Grammy winners and even been body slammed by professional wrestlers! He is the author of four books "American Countryside: Where Does Lost Luggage Go?, The Man Who Was President For a Day, God's Perfect View, and Making Molehills out of Mountains". These books contain entertaining and enlightening real-life stories that provide insights on leadership and life

itself.

A frequent speaker, he has spoken to groups in 49 states and audiences of up to 10,000 people. He also volunteers for many organizations in his local community, including serving as a certified lay speaker for churches. He is a past chairman of the Heartland Foundation and a current board member of Heartland Hospital based in northwest Missouri. He and his wife Paula and son, Luke, reside in northwest Missouri, where they help operate the family farm.



### **M. Kay Libbus, Faculty, MU Sinclair School of Nursing, & Alumnae Member**

M. Kay Libbus, DrPH, RN, is a Professor of Nursing and Women's Studies at the University of Missouri. She teaches courses in women's health and public health to undergraduate and graduate students and also participates in special courses for continuing professional education. Libbus wants her classes to be user-friendly yet challenging. Dr. Libbus is devoted to teaching and has worked hard to improve her teaching and her class outcomes. She received two Federal Advanced Nursing Education grants to develop and implement a totally web-based masters program in Public Health Nursing with or without a Specialty in School Health Nursing. She has also been intimately involved in facilitating classroom education for the University of Missouri through her work with the Wakonse Foundation.

Dr. Libbus has won numerous teaching awards including a Kemper fellowship and a faculty award for Excellence in Teaching at the School of Nursing. She has also been recognized for her work with students and has received citations from MU including the Alumnae Anniversary Award and the Division of Student Affairs award for Excellence in Education. As a researcher, she has been involved in numerous projects and has authored or co-authored more than 30 data-based articles that have been published in peer reviewed journals. She often speaks at professional meetings and has been a popular speaker to lay organizations in matters related to Women's Health.

## **Molly Burress, Graduate Institute of Cooperative Leadership, Department of Agricultural Education**

Molly Burress has lived and worked in Africa, Latin America and Central Asia. She is currently working for the Graduate Institute of Cooperative Leadership at the University of Missouri. Dr. Burress' research focuses on organizational innovations that improve local ownership, organizational design mechanisms for localizing residual claims to entrepreneurship, and collective entrepreneurial strategies for rural development.

## **Ashley Sewell, St. Louis Area Recruitment Director, Teach for America**

Ashley Sewell is the St. Louis area Recruitment Director for Teach For America. Ashley is a St. Louis native, growing up in the West County Suburbs. She graduated from DePauw University in 2006 with a Bachelor of Arts in Communications and Sociology. After graduation, Ashley joined Teach For America and began teaching 5th grade in the South Bronx in New York City. During her two year experience as a Teach For America corps member, Ashley had the pleasure of impacting the lives of over 50 students by overcoming numerous obstacles and challenges to ensure students at Public School 132 were receiving an excellent education. Her experience as a corps member was challenging and eye opening. Her teaching experience solidified Ashley's dedication to improving our nation's lowest performing schools and making sure that every child has the opportunity to attain an excellent education. This past June Ashley joined the Teach For America Recruitment Team as the St. Louis area Recruitment Director to make sure that Teach For America is finding more great leaders to teach in our schools where great teachers and leaders are needed most.



## **Mary Hendrickson, Associate Director, Community Food Systems & Sustainable Agriculture Program, and Associate Director, Community Food Systems & Sustainable Agriculture**

Dr. Hendrickson is an Extension Associate Professor in the Department of Rural Sociology, and is Director of the Food Circles Networking Project, an outreach program that links farmers and consumers together in local food systems, at the University of Missouri. Hendrickson's research and extension program focuses on understanding the changes taking place in the global food system and helps farmers, eaters, and communities create profitable alternatives. She has worked extensively with community groups working to increase the amount of fresh, flavorful and nutritious food available. She has helped numerous agriculture groups with marketing strategies and cooperative development, and is currently working with consumer groups to establish food policy councils and farm to school programs.

Hendrickson currently serves as the Associate Director for the University of Missouri Community Food Systems and Sustainable Agriculture Program. She participated in the International Assessment of Agriculture Science and Technology for Development as a coordinating lead author on the North America Europe sub-global report. She has served as President of the Agriculture, Food and Human Values Society (2006-2007) as President of the Community Food Security Coalition (2001-2003), a national organization of community-based sustainable agriculture, hunger, and environmental groups. From 2003-2005, she was a Food and Society Policy Fellow, a program funded by the Kellogg Foundation.

Hendrickson is involved in several research and outreach activities that specifically focus on increasing knowledge and awareness of community food systems among agriculture professionals and community leaders, as well as providing research information to farmers seeking alternatives. Hendrickson is the recipient of the 2002 Cooperative Service Award presented by the National Farmers Union. Hendrickson holds a bachelors of science in agribusiness from the University of Nebraska, and a masters and Ph.D. in rural sociology from the University of Missouri. Occasionally, Hendrickson helps her brother on the family farm near Shickley, NE.





**Betty Houchin Winfield, University of Missouri Curators Professor,  
Missouri School of Journalism**

Betty Houchin Winfield has been a member of the Missouri School of Journalism faculty since 1990. A specialist in political communication, Winfield is also an adjunct professor in the university's Department of Political Science and an affiliated professor in the Harry S. Truman School of Public Affairs. Before coming to Missouri, she was a professor of Communication and American Studies at Washington State University. She has had post-doctoral fellowships at the Shorenstein Center for Press, Politics and Public Policy at Harvard University (1991) and the Gannett Center for Media and Politics at Columbia University (1988-1989).

Winfield has written three books and seven book chapters, including *FDR & the News Media* (Columbia University Press, 1994). She has also published more than 70 encyclopedia and journal articles and numerous scholarly papers on mass media history and White House communication. Among them are analyses of Hillary Rodham Clinton and Anna Eleanor Roosevelt's relationships with the public and the media. In 1998 the University of Missouri awarded Winfield its prestigious Thomas Jefferson Award for an Academic Career Embodying the Jeffersonian Principles and Ideals in Scholarship and Teaching, and in 2002 she received the MU Faculty Alumni Award. In 2003, she was honored with a University of Missouri Curators' Professorship, which she will hold for the rest of her career at MU.



**Vicki Pinkel, First Lady of Mizzou Football**

Originally from Van Wert, Ohio, Vicki graduated from Kent State University. It was during her time as a student at Kent State that Vicki met her future husband, Gary. The couple married is celebrating their 35<sup>th</sup> wedding anniversary this year.

Vicki and Gary have a daughter, Erin, and sons Geoff and Blake. The couple has four grandchildren – Madison, Ellyson, Gracyn and Taylor.

Last Name	First Name	Membership Level
Allen	Carolyn M.	Alumnae
Allison-Putman	Andrea	Alumnae
Andrade	Christina	Student
Arnott	Alaine	Student
Barker	Carrie	Student
Barstadt	Aly	Student
Benassi	Angela	Alumnae
Benoit	Pam	Alumnae
Bien	Carrie	Student
Bloom	Patty	Student
Bobbitt	Ashley	Student
Boyer	Kim	Alumnae
Bray	Kellie	Alumnae
Bray	Kristie	Alumnae
Brown	Doris	Alumnae
Brown	Jill	Alumnae
Browne	Laura	Student
Buri	Kristen	Student
Burkhead	Sarah	Student
Burmester	Rachel	Student
Butterfield-Cupp	Linda	Alumnae
Case-Halferty	Anne	Student
Claxton	Jennifer	Student
Cohen	Rachael	Student
Crews	Jessica	Student
Cummings	Cary	Alumnae
Dean	Cathy	Alumnae
Deaton	Anne	Alumnae
DeMott	Dana	Student
Dills	Jennifer	Student
Dirks	Lerin	Student
Doyle	Anna	Alumnae
Eggermann	Katie	Student
Ekhoff	Jessica	Student
Feeney	Julie	Student
Ferguson	Shannon	Student
Ferrell	Alexandra	Student
Fischer	Jennifer	Alumnae
Fitzler	Julie	Student
Flanegin	Suzanne	Alumnae
Fowler	Leah	Student
Francis	Carlia	Student
Gerstenkorn	Katie	Student
Gibler	Michelle	Alumnae
Gibson	E. Jane	Student
Gill	Andrea	Student
Gole	Hope	Student
Griswold	Heidi	Alumnae
Habegger	Rebecca	Student
Harr	Traci	Student
Hoffman	Amanda	Student

Holland	Jennifer	Student
Horan	Jean	Student
Housley	Lucinda	Student
Huffman Grinch	Carin	Staff
Hurt	Carol	Alumnae
Johanning	Jennifer	Student
Johnson	Chelsea	Student
Johnson	Cia	Student
Jones	Deborah	Alumnae
Jones-Zahorsky	Sheryl	Alumnae
Jordan	Karen	Alumnae
Kanagui	Marlen	Student
Kimball	Jennifer	Student
Kinsella	Becca	Student
Kist	Katie	Student
Kline	Katrina	Student
Kratzer	Jessica	Student
Kraus	Karen	Student
Krawitz	Nikki	Alumnae
Krug	Giuli	Alumnae
Lackos	Alexandra	Student
Larson	Patty	Alumnae
Launhardt	Alison	Student
Lehmer	Denise	Alumnae
Libbus	Kay	Alumnae
Littrell	Doris	Alumnae
Marcolla	Madison	Student
Maxwell	Amanda	Student
McClelland	Emmy	Alumnae
McClure	Beth	Alumnae
McClure	Mary	Alumnae
McCoy	Casie	Student
Merritt	Laura	Student
Mershon	Tracey	Alumnae
Moran	Mickey	Alumnae
Mueller	Lori	Student
Mustard	Cindy	Alumnae
Neher	Janese	Student
Nichols	Suzie	Alumnae
Niekamp	Marcia	Alumnae
Norris	Alexia	Alumnae
O'Byrne	Diane	Alumnae
O'Farrell	Kristin	Alumnae
Orf	Janine	Alumnae
Pedersen	Adrienne	Student
Perrin	Brittany	Student
Pfeifer	Jaimie	Alumnae
Phillips	Anji	Student
Plain	Diana	Student
Pope	Kimberly	Student
Powers	Jessica	Student
Prettyman-Gage	Lisa	Alumnae

Pryor	Kelli	Alumnae
Quinn	Stacy	Alumnae
Reesman	Sarah	Alumnae
Riback Wilson	Vicky	Alumnae
Ridgway	Robyn	Alumnae
Rife	Ali	Student
Riley	Shirley	Alumnae
Rodvelt	Kelli	Student
Roxberg	Emily	Student
Ryan	Mary Jo	Student
Schach	Allison	Student
Schlarman	Maggie	Student
Schopp	Laura	Alumnae
Smith	Kandis	Alumnae
Smith Maness	Seigrid	Alumnae
Spradling	Emily	Student
Stephens	Cheryl	Alumnae
Surjadi	Dea	Student
Tandy	LuAnn	Alumnae
Taylor	Janet	Alumnae
Tenorio Davis	Elizabeth	Alumnae
Tenorio Lakin	Monica	Alumnae
Thomas	Jenna	Student
Thompson	Cindy	Alumnae
Thompson	Darlene	Alumnae
Tuggle	Kate	Student
Tull Meyer	Sabra	Alumnae
VanDyne	Tuck	Alumnae
Voss	Kim	Alumnae
Warren	Lamara	Alumnae
Wenneker	Robin	Alumnae
Williams	Amanda	Student
Withrow	Alex	Student
Wood	Mary	Alumnae
Zotta	Jessica	Alumnae